



*Real-Time
Tracker* >



**Haicom
HI-602**

HI-602



4 710635 515560



OPERATION MANUAL

Haicom HI-602



HI-602 is an all in one tracking solution offering your GPS/SMS/GSM/DTMF/GPRS in Real Time solutions.

Haicom HI-602 is most suitable for the tracking solution and can do the real time tracking and you see the object moving on the map live simultaneously. HI-602 come with re-chargeable battery for the personal tracking purposes. Just put HI-602 on pocket, the back pack, carton, motorbike, etc. or any moving object, user can check the object globally with different and flexible ways of tracking.

Along with it, under DTMF mode, there is free PC base Haicom Tracking software which takes few steps and you can see the moving object live on the map.

Haicom tracker is multi-functional GPS/SMS/GSM/GPRS tracker. User can switch the DTMF mode or GPRS mode from any phone with few phone digits pressed.

With DTMF tracking mode, Haicom trackers need only a normal SIM card (prepaid or postpaid) of any operator and is ready for use, there are NO other charges than the phone calls made from the tracker to your phones.

HI-602 is very small in size and it can put in a waterproof case and bigger battery pack for different kind of tracking purposes. We can also do the customize modify to fit in your special applications.

Haicom HI-602

GETTING STARTED:

1. Open Battery Cap



2. Insert GSM SIM Card

**Make Sure SIM Card no need pin code*



3. Put Battery in



4. Close Battery Cap

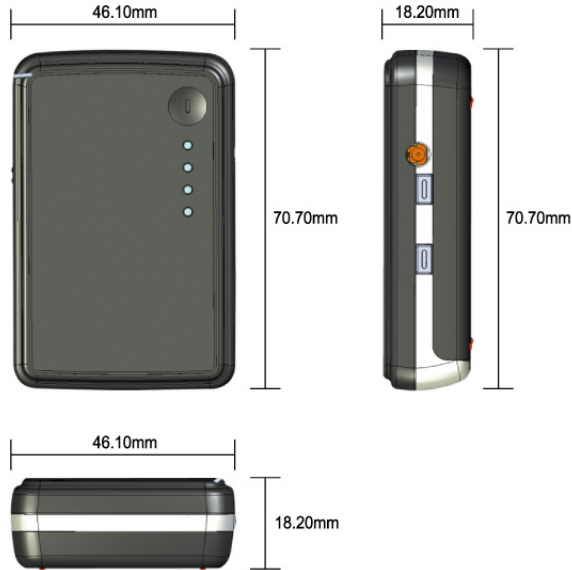


HI-602DT main unit overview:



Haicom HI-602

Dimension:



LED Indicator:



LED Color	LED	Status
Amber	On Off	Charging Charge Completed
Green	flashing Stay on Off	GPS in 3D fixed GPS not 3D fixed yet GPS in sleeping mode
Red	On	Battery low
White	64 ms ON/3S OFF 64 ms ON/0.8S OFF	GSM stand-by Searching GSM network or no SIM

Haicom HI-602

HI-602 decoder overview:



LED Color	Stay on	OFF
Orange	GPS data valid (3D fixed)	GPS data not valid
Red	Decoding(4 seconds interval)	
Green	Receiving data	

Optional BT decoder

Example: Realtime track with any smartphone or mobile phone



Example: Decoder mic attached to any smartphone speaker



Treat this combination as a regular Bluetooth GPS receiver.

From the mapping software, select com port, start GPS.

Packing:

Standard items:

- 1 HI-602
- 2 Decoder
- 3 18pin connector
- 4 1100 mAh Li-on rechargeable battery
- 5 AC power adaptor with USB plug
- 6 mini CD
- 7 user manual



1



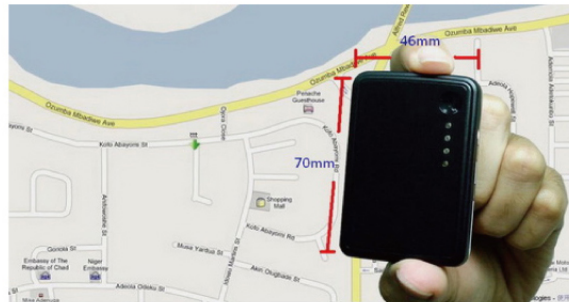
2

Haicom HI-602

Standard items:



Optional Accessories



Name	Appearance													
1. Car control kits main unit														
2. Car control cable sets														
3. HI-602DT to car kit cable														
4. USB Decoder		<table border="1"> <tr> <td>LED Color</td> <td>Blue</td> <td>OFF</td> </tr> <tr> <td>Orange</td> <td>LED on when GPS fixed</td> <td>LED on when not fixed</td> </tr> <tr> <td>Red</td> <td>Change of satellite status</td> <td></td> </tr> <tr> <td>Green</td> <td>Working state</td> <td></td> </tr> </table>	LED Color	Blue	OFF	Orange	LED on when GPS fixed	LED on when not fixed	Red	Change of satellite status		Green	Working state	
LED Color	Blue	OFF												
Orange	LED on when GPS fixed	LED on when not fixed												
Red	Change of satellite status													
Green	Working state													
5. BT Decoder		<table border="1"> <tr> <td>LED Color</td> <td>Blue</td> <td>OFF</td> </tr> <tr> <td>Orange</td> <td>LED on when GPS fixed</td> <td>LED on when not fixed</td> </tr> <tr> <td>Red</td> <td>Change of satellite status</td> <td></td> </tr> <tr> <td>Green</td> <td>Working state</td> <td></td> </tr> </table>	LED Color	Blue	OFF	Orange	LED on when GPS fixed	LED on when not fixed	Red	Change of satellite status		Green	Working state	
LED Color	Blue	OFF												
Orange	LED on when GPS fixed	LED on when not fixed												
Red	Change of satellite status													
Green	Working state													
6. APN setup cable														

Haicom HI-602

Name	Appearance	
7. Water proof jelly bog		
8. Car battery cable		
9. HI-SDL data Logger		
10. Moving sensor for power saving		
11. Battery pack for HI-602 (5,500 / 11,000 mAh)		
12. 12,100 mAh Battery Pack for HI-602 (with waterproof case and magnet)		
13. 23,100 mAh Battery Pack for HI-602 (with waterproof case and magnet)		
14. Carrying pouch		

HOW TO USE GPRS Tracking

Haicom provides free, web-based GPRS online tracking. Users can create their own account with the capacity to handle up to 1,000 trackers.

To enable this function a GPRS enabled SIM card is required.

Instructions:

- Put the SIM card in the tracker and make sure there is no pass code request on the SIM card. (To disable the pass code put card in your mobile phone- and disable the SIM PIN)
- Enter tracking website:
http://www.tracking.haicom.com.tw:8090/gps_realtime.php
- Login -- On the HI-602DT/GPRS you will find a code starting with Hixxxx. This the account number and the password used for login.
 Account:Hlxxxxx
 Password:Hlxxxxx
- After login Click 'ADD NEW'
- Name – input your own personalized name for the the tracker.
- Tracker ID -- is the IMEI number on the tracker
- Click on 'REAL TIME' and you will see your real time location
- Password change -- Click on 'modify password' to personalize your password
- Time zone -- click on 'User Account' to change the time zone
- Select your telecom APN from the list: ref to page****
- Historical location -- Click on the 'HISTORY' and select tracker and time period for which you want to see tracker location. Press play/stop history to play back the history of the tracker. You can also save the file by pressing SAVE TO KML FILE.

* See Appendix A for more details

** See Appendix B for more details

Haicom HI-602

DTMF Tracking HOW TO USE DTMF Tracking

HI-602DT DTMF tracking solution provides user-friendly real-time tracking with a standard SIM card. Simply call the tracker, listen for the dial tone and put the phone speaker to the decoder microphone. The decoder will decode the dial tone into a standard GPS NMEA data. With inclusive Haicom Tracking software, user can see the object moving live on Google map.

Step by step DTMF tracking:
 Install the driver first

1.
 Connect the decoder to the USB port**



Track it easy 1.2.3.4

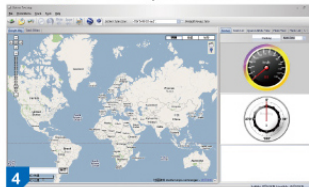
2.
 Call the Tracker attached the phone speaker



3. Open the software, Select the com port and start to track



4. You will see your Real-time location



HI-602DT ADVANCE SETTINGS

HI-602DT setting – 1

User can set up HI-602DT varies commands via the regular dial tone from any regular phone (see the Appendix C for simple list of the dial tone commands) . After the connection, put in your pass code 0000 to enter different set up procedures.

HI-602 has two types of settings:

- (1)Basic setting (*): Set up the device pass code, anti-theft, SOS 6 sets of dial back telephone numbers.
- (2)Advance settings (#): Set up PIN code, and activate or deactivate varies functions.

HI-602 has two setting modes:

1.No pass code required mode

2.pass code required

When the device is set up as no pass code required , all commands will be done with out a pass code

to set up the HI-602 for no SIM card PIN code mode

1.Dial and connected with the HI-602 from the normal phone press the 4 digit pass code **0000**

2.Press **0 #** to disable the PIN code require setting

3.Pass code required mode

When the device is set up as pass code required mode, all commands will be done after the pass code keyed-in and certified **0000**

The pass code required mode must be done for some operations:

Car oil cutting operation (**40, 4#, 4***)

Dial and connect to the HI-602 -> key-in " # " and " four digits pass code " -> after the pass code certified ->

40 immediately oil cutting

4# oil cutting when the car stop – 0 km (for safety reason)

4* dis-able the oil cutting

1 TO CHANGE THE PASS CODE

Dial and connect HI-602

Press **#** Press **4 digits** pass code **0000** Hear a long " du Perss **0** Press the prefer 4 digit pass code twice and press* to complete the setting you will Hear a long " du " to verify the pass code or " du du du d u " for incorrect key in

3.Dial and connected with the HI-602 from the normal phone

Press **#** then, press the 4 digit pass codes

Press **0** then, press the 4 digit SIM card pass codes twice to complete the setting

Haicom HI-602

TO programming three call back numbers(1st set)

Dial and connect HI-602

Press ******* Press **4** digits pass code **0000** Hear a long " du " Press **1** then, press the first set (anti-theft) dial back telephone number. And Press ***** to complete the procedure. you will Hear a long " du " to verify the pass code or " du du du du " for incorrect key in

Press **2** then, press the second set (anti-theft) dial back telephone number. and press ***** to complete the procedure.

Press **3** then, press the third set (anti-theft) dial back telephone number. and press ***** to complete the procedure.

TO programming three call back numbers(4th set)

Dial and connect HI-602

Press ******* Press **4** digits pass code **0000** Hear a long " du " Press **4** then, press the first set SMS back telephone number. And Press ***** to complete the procedure. you will Hear a long " du " to verify the pass code or " du d u d u " for incorrect key in Press **5** then, press the fifth set (SOS) dial back telephone number. Press ***** to complete the procedure.

Press **6** then, press the sixth set (SOS) dial back telephone number. Press ***** to complete the procedure.

* The dial back telephone digit can be set from 7~16 digits

SMS coordinate send back settings (21, 22, 23)

1. after programming the SMS call back number Call the tracker and connect press **#** and the pass code **0000** and **21** the tracker will hang up
2. you will receive an SMS with the real time location

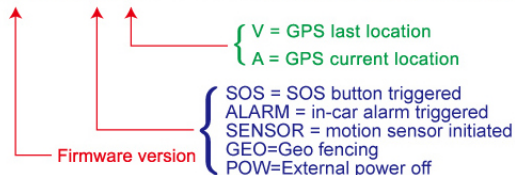
The SMS message will look like this:

* HC-V.3.5*SOS*V,N, 23°51' 15.6, E, 120° 41' 09.6, 020.3, 358.2*

Example and explanations:

Latitude	Longitude	Speed (sea mile)	Direction (360)
* HC-V.3.5*SOS*V,N, 23°51' 15.6,	E, 120° 41' 09.6,	020.3,	358.2*

* HC-V.3.5*SOS*V,N, 23°51' 15.6, E, 120° 41' 09.6, 020.3, 358.2*



To cancel the call back telephone number 3 for example

Dial and connect HI-602 Press ******* Press 4 digits pass code **0000** Hear a long " du " "Press **3 * *** " hear nothing -> for canceling the third dial back telephone number.

To set up the GPRS data send back time interval

Dial and connect HI-602 Press ******* Press 4 digits pass code **0000** Hear a long " du " "Press **33006 #** " hear a " du " for verify the command set up successfully.

Remarks:

1. The "0000" is the default pass code
2. **33** is the command for set up the GPRS send back interval
3. **006** is auto send back every 30 seconds (can set from 001 to 255 interval: about seconds to minutes)

To re-flash all the settings back to defaults:

1. Dial and connected with the HI-602. Hear the continue dial tone
2. Press ***96#03890** and hang up

1. Basic settings (*)

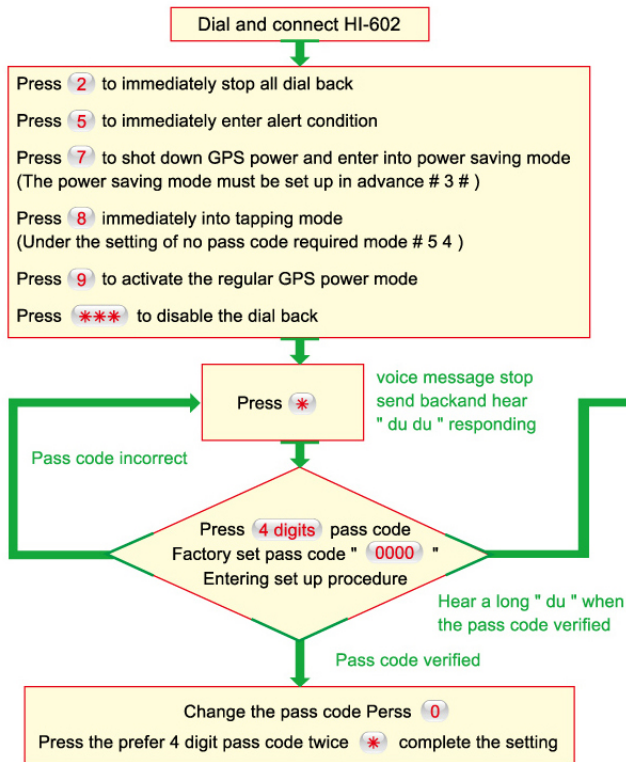
Set up the device pass code, anti-theft, SOS 6 sets of dial back telephone numbers. User can set up 6 sets of dial back telephone numbers inside HI-602. The first 3 numbers are for anti-theft dial back and the last 3 numbers are for SOS SMS emergency dial back.

When the moving sensor, ultra-sound sensor and power cut off situation activated, HI-602 will automatically dial back the pre-set telephone numbers in sequence. When receive the call from the anti-theft dial back, user will hear the voice message. You can press ******* to reset the alarm. If not key in the ******* HI-602 will then send the SMS message back to the host phone in case of the host phone run out of power or under GSM weak signal.

The last 3 numbers are for SOS emergency dial back. When the panic button was activated, HI-602 will dial back the 3 pre-set telephone numbers in sequence.

Haicom HI-602

Basic setting flow chart (*):



Hear a long " du " to verify the pass code or " du d u du d u " for incorrect key in

Press **1** then, press the first set (anti-thief) dial back telephone number.

Press ***** to complete the procedure.

Press **2** then, press the second set (anti-thief) dial back telephone number.

Press ***** to complete the procedure.

Press **3** then, press the third set (anti-thief) dial back telephone number.

Press ***** to complete the procedure.

Press **4** then, press the fourth set (SOS) dial back telephone number.

Press ***** to complete the procedure.

Press **5** then, press the fifth set (SOS) dial back telephone number.

Press ***** to complete the procedure.

Press **6** then, press the sixth set (SOS) dial back telephone number.

Press ***** to complete the procedure.

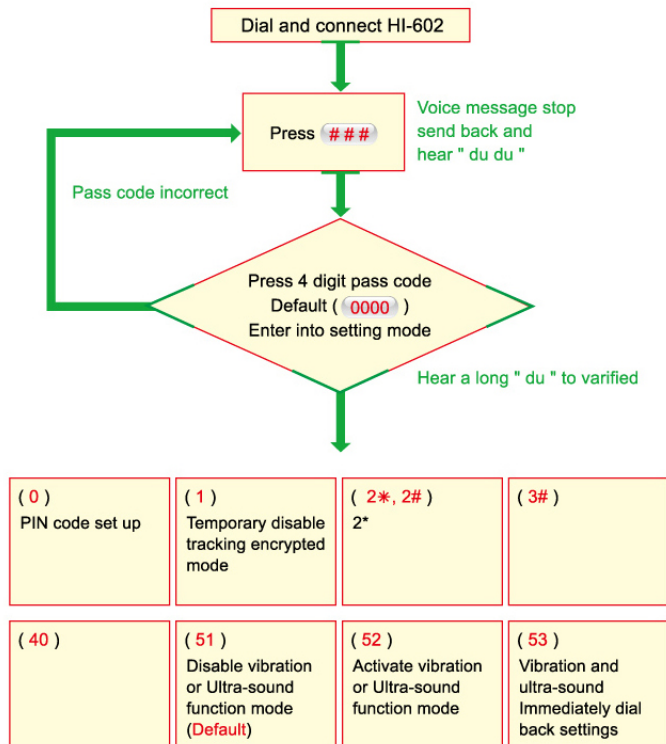
EXAMPLE:

Press " **3 0912 123456*** " for set up the third anti-thief dial back telephone number

Press " **3*** " hear nothing -> for canceling the third dial back telephone number

Haicom HI-602

Advance setting flow chart (#):



(54) Tapping no pass code required settings	(1) Temporary disable tracking encrypted mode	(55) Tapping with pass code required	(56) Vibration and ultra-sound Function with delay dial back
(57) Tracking without encryption Setting	(58) Tracking with encryption Setting	(2* , 2#) SMS function dial back 2* activated (default) 2# disable	(21 , 22 , 23) Send back the GPS coordinates Via SMS to designated phone number
(24) SMS coordinates sent back To control center	(25 ~ 29) Coordinates send to designated Phone numbers from the web	(6*) GPS location fixed Dial back	(6#) Dial back when GPS in certain speed
(3#) Activate GPS power Saving mode	(3*) Disable the GPS power Saving mode	(71) 3 sets anti-theft dial back numbers testing	(74) 3 sets SOS dial back numbers testing
(77) SMS message dial back testing	(40) Immediately Oil cutting	(4*) Disable oil cutting	(4#) Oil cutting when speed at 0 km
(8) In-car tapping	(9) Back to tracking mode From the settings		

Haicom HI-602

2. Advance settings (#)

The HI-602 advance settings are most for the functions which no need frequent changed:

1. SIM card PIN code settings (0)
2. Voice message encrypted settings (1, 57, 58)
3. SMS coordinate send back settings (21, 22, 23)
4. Send coordinate via SMS to server settings (24, 25, 26, 27, 28, 29)
5. Anti-theft function settings (51, 52)
6. Tapping function encrypted settings (54, 55)
7. Moving sensor status settings (53, 56)
8. GPS position fix, certain speed dial back (6*, 6#)
9. Dial back number function testing (71, 74)
10. System SMS function testing (77)

SIM card PIN code settings (0)

To ensure the personal privacy, the SIM card inside HI-602 may need to be changed to prevent from some others use it.

Please put the SIM card into any normal GSM phone and change the 4 digits SIM card PIN codes. Then, take out the SIM card and put it into the HI-602.

Each time when the HI-602 switched on, the SIM card PIN code (4 digits) will automatically key in.

Set up the HI-602 for no need any SIM card PIN code:

1. Dial and connected with the HI-602 from the normal phone
2. Press # then, press the 4 digit pass codes
3. Press 0 then, press the 4 digit SIM card pass codes twice to complete the setting

For instance:

0 5 6 7 8 5 6 7 8 # -> set the SIM card PIN code as 5678

Press 0 # to disable the PIN code require setting

Voice message encrypted settings (1)

The 57 and 58 are for set up whether or not the pass code required when the voice message send back. When the HI-602 set as 58 mode, the pass code is required (press # then, press 4 digit pass code and press 1) when HI-602 need to send back voice message (send back 3 minutes or 50 sets of data).

SMS coordinate send back settings (2*, 2#, 21, 22, 23)

After the settings, HI-602 will send the current moving object location via SMS message to designated telephone numbers: the pre-set 3 sets dial back telephone numbers from the basic settings under the condition of the SMS send back function is activated.

1. Dial and connected with the HI-602 from the normal phone
2. Press # then, press the 4 digit pass codes
3. Press 2# to disable the SMS message send back function and activate it by press 2*

Press 21 or 22 or 23 and the designated telephone will receive the coordinate via SMS in 10 seconds

Regarding to the telephone settings, please refer to the previous basic setting section in item 1

Send the GPS coordinates to the server via SMS settings (24, 25, 26, 27, 28, 29)

This is HI-602 extra function for use HI-602 via Internet to check the moving objects.

Via SMS message network, HI-602 can send the current GPS coordinates to the Internet server. After the transformation into the point on the mapping software, the user can track the object even no PDA in hand.

Settings:

1. Dial and connected with the HI-602 from the normal phone
2. Press # then, press the 4 digit pass codes
3. Press 24 to make HI-602 send the object coordinates to the designated server via SMS. User can check the location from the Internet later.
4. Press 25 to 29 The calculated location coordinates will sent via SMS to the pre set mobile phone (user can per set 5 sets telephone numbers from the web)

GPS receiver saving mode (3*, 3#, 7)

The default setting for the GPS receiver inside the HI-602 the power saving mode function is enabled.

The GPS power saving mode function is based on the moving sensor operation. When the car or object stand still (the moving sensor no action for more than 10 minutes) The GPS receiver will automatically shot down the power supply and into the sleeping mode. When the moving sensor activated again, the GPS receiver will back on powered. This function is most helpful for the application on personal tracking or motorbike tracking because the battery power is limited.

Haicom HI-602

Settings:

1. Dial and connected with the HI-602 from the normal phone
2. Press # then, press the 4 digit pass codes
3. Press 3 # to enable the power sleeping mode and 3* to disable the power saving mode.

To turn off the GPS power supply:

1. Dial and connected with the HI-602 from the normal phone
2. Press 7 (GPS sleeping mode must be enabled)

Remotely control to cut off oil supply (40, 4#, 4*)

1. Dial and connected with the HI-602 from the normal phone
 2. Press # then, press the 4 digit pass codes
 3. Press 40 then hear a long "du" for correct key in and "du du du du" for incorrect key in
 4. The HI-602 will cut off the car oil supply after the above settings
 5. In case of safety reason, press 4# and the HI-602 will cut off the car oil supply after the above settings when the car speed stop or in 0 km
- If the settings correct, hear a long "du" and the device cut the oil. Or, hear "du du du du" for not success setting
- To disable the oil cutting, press 4* and if the settings correct, hear a long "du" and the device cut the oil. Or, hear "du du du du" for not success setting

Moving sensor and ultra-sound activated (51, 52):

- 51 Cancel the status
 52 Activate the status

The default setting for the moving sensor or ultra-sound function is disabled. To activate the functions:

1. Dial and connected with the HI-602 from the normal phone
2. Press # then, press the 4 digit pass codes
3. Press 51 or 52 to disable it
4. Hear a long "du" for correct key in and "du du du du" for incorrect key in

Moving sensor and ultra-sound responding (53, 56):

After pre-set status, when the moving sensor senses the movement, HI-602 will initiate the anti-thief dial back procedure to inform the host. Due to some car is heavy or the moving sensor installed on the easy-to-move place, user can set the moving sensor as continue movement so that the dial back procedure will only activated when the movement is keep happening.

1. Dial and connected with the HI-602 from the normal phone
2. Press # then, press the 4 digit pass codes
3. Press 53 for immediately dial back respond or 56 for delay (10 seconds) responding under continue movement status.

Activate in-car tapping with pass code required or not (8, 54, 55)

To hear people talking in-car and no need pass code required:

1. Dial and connected with the HI-602 from the normal phone
2. Press 8 to enter immediately tapping mode.

For better privacy protection, user can set up the HI-602DT so that it will need pass code to enable tapping function.

1. Dial and connected with the HI-602 from the normal phone
2. Press # then, press the 4 digit pass codes
3. Press 54 for hearing people talking in-car and no need pass code required status or press 55 for required pass code to enable tapping function

Pass code required when tracking (1, 57, 58)

Under default setting, etc. as instantly do the real time tracking. But for personal privacy reason, user can set the condition which only use the pass code to do the tracking.

1. Dial and connected with the HI-602 from the normal phone
2. Press # then, press the 4 digit pass codes
3. Press 1 to start receiving real-time GPS location message for 3 minutes

GPS location fixed dial back (6*)

When GPS inside HI-602 unable to get 3D satellite fixed (the car inside garage, underground, etc. as soon as the GPS gets 3D fixed again, HI-602DT will automatically dial back to inform the host.

1. Dial and connected with the HI-602 from the normal phone
2. Press # then, press the 4 digit pass codes
3. Press 6* to get dial back call when the GPS gets satellites fixed again

Dial back when GPS in certain speed (6 #)

Dial back when the car at the first time more than certain speed (say 20 km). The function is to inform host when car is moving in certain speed after parking.

1. Dial and connected with the HI-602 from the normal phone
2. Press # then, press the 4 digit pass codes
3. Press 6# to cut the car power under the above situation

Haicom HI-602

Dial back number testing (71, 74, 77)

Make sure if the all pre set dial back numbers are correctly set up.

1. Dial and connected with the HI-602 from the normal phone.
2. Press # then, press the 4 digit pass codes
3. Press **71** to test the first 3 pre set telephone numbers or **74** to test the last emergency help dial back telephone number. Or press **77** to test the SMS network functionality.

Leaving setting mode and back to voice message send back mode (9)

To re-flash all the settings back to defaults:

1. Dial and connected with the HI-602 . Hear the continue dial tone
2. Press ***96#*03890** and hang up

Geo Fencing function set up

User can call the HI-602 and set up the Geo Fencing function so that if the tracker out of the preset radius distance, the tracker will automatically send SMS back to the preset telephone numbers for warning.

Set up procedures:

1. Call the telephone numbers inside the HI-602
2. Hear the continue dial tone and press **# 0 0 0 0** and hear "du" for confirm the pass code key in OK.
3. Press **63 XXX #**
4. Then, hang up the phone.

Remarks:

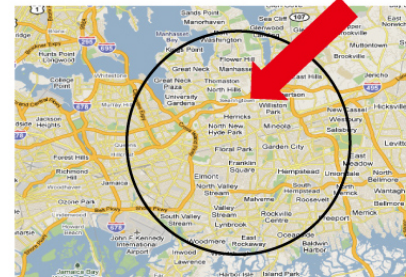
1. The step2 is the normal procedure to entering the control settings
2. **61** is the Geo Fencing command code
3. "XXX" is the radius distance that the user can set up: user can press **001** ~ **254** and the **001** will be 18 meters, **002** will be 36 meters, etc. HI-602DT maximum Geo Fencing radius can be set up to 4,572 meters (254 x 18: around 4.5 Km)

User can set up the GeoFencing from any remote phone anywhere.

After the remote settings completed, HI-602 will sound: B B B B
 It will also B B B B when t he user press the Geo Fencing button (please keep pressing the button wait until the coordinates record completed , then, HI-602 will B B B B)

The Geo Fencing radius settings will be saved until the new setting being set up.

Radius of area Configurable



Auto SMS send back set up

There will have 7th dial back telephone number set up (It is 6 set dial back numbers for previous versions)

The 7th set dial back telephone number is for the continue auto SMS send back set up.

The procedures:

5. Call the telephone numbers inside the HI-602
6. Hear the continue dial tone and press **7 XXXXXXXX** to set up the 7th dial back telephone number (the device will connected to your server to take the call) Then, hang up the phone.
7. Call the telephone number inside the HI-602
8. Hear the continue dial tone and press **# 0 0 0 0** and hear "du" for confirm the pass code key in OK.
9. Press **20510**

Remarks:

1. The "XXXXXX" represent the telephone number that you want the HI-602DT to dial back.
2. The "0000" is the default pass code
3. **20** is the command for set up the auto SMS send back
4. **5** is auto send back every 5 minutes (can set from 1 to 9 minute interval)
5. **10** is auto send back 10 times SMS (can set from 1 time to **99** times SMS set back) set **99** for none stop send back. Set up **00** or power off to stop the command.

Haicom HI-602

REMARKS:

1. For easy to use, user can carry the below small card for some important settings:

Pass code: _ _ _ _

Temporary disable the alert

After receive the alarm dial back,

Press *

Immediately into alert mode

After connection, press 5

Tapping mode

After connection, press 8

Press * back to tracking mode

Remote oil cutting

After connection, dial code: _ _ _ _

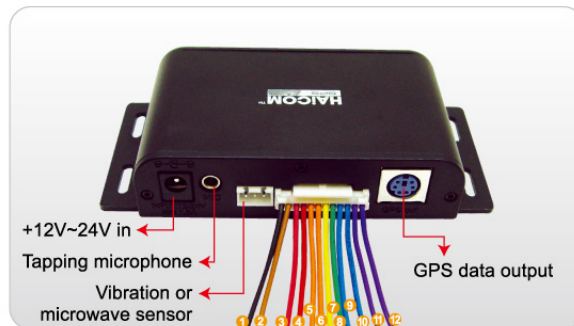
40 : cut oil

4# : cut oil when speed 0 km

4* : disable cut oil

2. For safety reason, the telephone number inside HI-602 is the first fence to prevent others. It is also the best pass code. As long as other people do not know the telephone number, the user can protect his privacy.

3. Under some special circumstances, the host need to tell other people the telephone number inside HI-602. User may need to set up special pass code to prevent the system modified by other party.



HI-602DT car kit set up example



- ① GND
- ② Vin 12~24V
- ③ Alarm reset
- ④ Alarm reset
- ⑤ SOS switch panic button
- ⑥ SOS switch panic button
- ⑦ X
- ⑧ Burglar trigger(**)
- ⑨ Remote Relay(**)
- ⑩ Remote Relay(**)
- ⑪ Remote Relay(**)
- ⑫ Remote Relay(**)

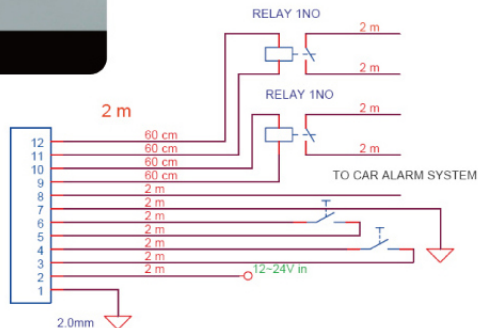
** For oil or electricity cutting

* From in car alarm system

Haicom HI-602

permanent power on installation example:

HI-602DT connected to car battery via car kit control box



When used with the car battery cable for permanent power on installation, do make sure HI-602 main unit can "see" the sky (no metal material on above) so that the GPS inside can get 3D fixed. In case of hiding HI-602DT inside car trunk, please use the GPS (MMCX) external antenna.



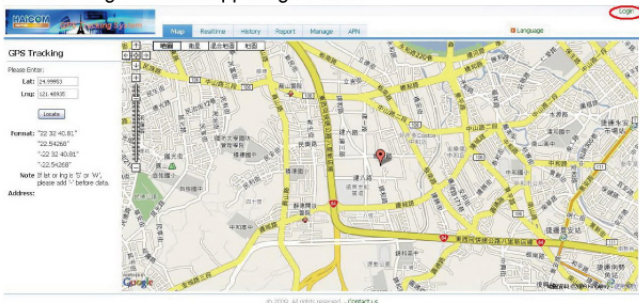
Appendix A

Haicom HI-602

1. Enter Haicom home page: <http://www.haicom.com.tw>
2. Click the " Haicom GPRS " icon



3. Hyper link to Haicom GPRS page
4. Click " Login " on the upper right corner "



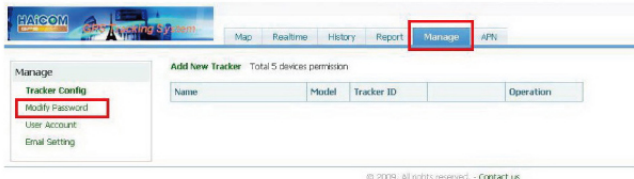
5. On HI-602 or HI-603 unit, you will find the code starting with HIXXXXXXX the account and the password is the same.
Account: HIXXXXXXX
Password: HIXXXXXXX



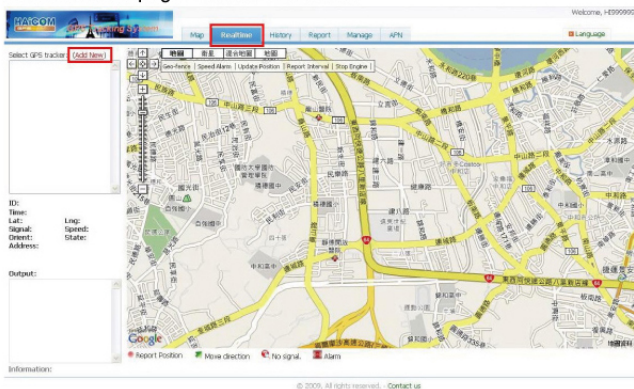
Appendix A

Haicom HI-602

6. After login, select the "Manage" for Modify Password



7. On Realtime page, Select "Add New"



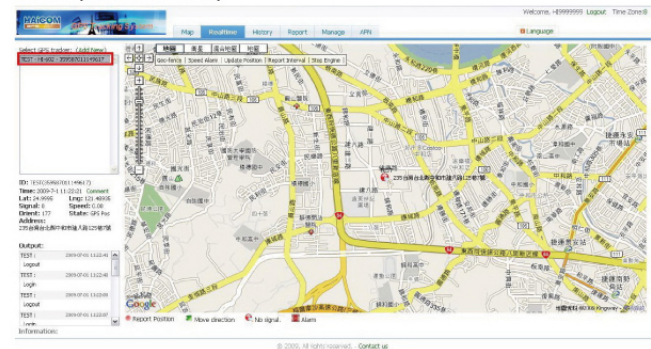
8. The tracker name is what you want to call your tracker
The tracker ID is the IMEI number on the tracker
Click on " Realtime " you will see your real time location

Click on modify password to change the password if you wish to change the password

Click the User account to change the time zone



9. Completed the set up



Appendix B

Haicom HI-602

Please install USB driver first

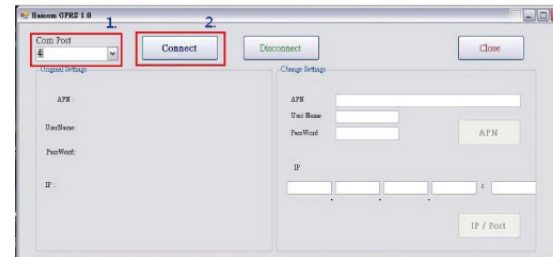
Connect HI-602 or HI-603 to computer USB port



Open 602V090703C folder



1. Select USB com port
2. connect
3. Switch HI-602 or HI-603 Power on



Appendix B Haicom HI-602 GPS/GSM

- 1.Key-in APN name
- 2.set up



Switch the tracker Power off and on again



Remark:
Please make sure put battery in the HI-602 because the APN set up connection cable do not supply power. e

Appendix C

HI-602 / HI-603 dial tone command sets (602V96H)

# Pass	* Pass
0 new new # (change PIN)	*62#*590 (reset all command settings)
1 (temporary disable tracking encrypted)	0 new new * (change pass code)
SMS send back 21 (to 1st set) 22 (to 2nd set) 23 (to 3rd set) 24 (to 4th set) 25 (to 5st set) 26 (to 6th set)	5 (enable alarm function immediately)
2# (Cancel SMS) 2* (Activate SMS - default)	8 (bugging) , 8 again (ringing)
40 (Relay 1 open) 4* (Relay 1 back to normal)	9 (back to tracking mode)
46 (Relay 2 open) 47 (Relay 2 back to normal)	Set up dial back telephone numbers 100000000000* (1st set, for alarm trigger) 200000000000* (2nd set, for alarm trigger) 300000000000* (3rd set, for alarm trigger) 400000000000* (4st set, for SOS trigger) 500000000000* (5st set, for SOS trigger) 600000000000* (6st set, for SOS trigger) 700000000000* (7th set, for SMS multi - sending) 80602500680239101* (GPRS IP set)
51 (Disable moving sensor - default) 52 (moving sensor stand by)	
53 (immediately SMS send back after movement - default) 56 (SMS send back 10 econds after movement)	
54 (Bugging without pass code - default) 55 (Pass code required for bugging)	
57 (Tracking without pass code - default) 58 (pass code required for tracking)	
6* (dial back after GPS fixed) 6# (dial back when over 20km)	
63I (Active & set up Geofencing) 61 (remote active) 60 (remote disable)	63050# (050 x 18 = 900m) Range: 001-255
20 (auto SMS continue send back)	20101 20 initial command 1 ~ 9 (every X minite) 01 ~ 98 (send XX times) 99 continue none stop 00 rest
67 (Sounded when press SOS button - default) 68 (Silent when Press SOS button)	
64 (Power off warning dial back - default) 65 (disable power off warning)	
380# (Activate GPRS UDP port) 381# (Activate GPRS TCP port) 300# (Disable GPRS)	
31 (tracking mode) 32 (ACC mode)	
3* (Disable GPS power saving) 3# (Active GPS power saving - default) 7 (GPS sleep immediately) 9 (GPS full power immediately)	
Dial back test 71 (to 1st, 2nd, 3rd) 74 (to 4th, 5th, 6th) 77 (SMS to 1st, 2nd, 3rd)	

Where to put the GPS

